

## ENDOINJECTOR™

### FUEL-INJECTION MIXING SYSTEM FOR ENDOTHERMIC GAS GENERATORS

#### DESCRIPTION

The EndoInjector™ is a precision gas mixing and control system for endothermic gas generators. The system incorporates a patented fuel injection design that utilizes electronic flow measurement and precise ratio control to consistently provide the ideal gas mixture for highquality endothermic gas generation.

The EndoInjector™ significantly reduces operating costs by eliminating gas waste. The fuel injection design automatically provides gas mixture on demand, providing only as much endothermic gas as your furnaces require. Designed to easily replace existing carburetor/pump designs, the EndoInjector™ typically pays for itself in less than one year.



## ENDOINJECTOR™

- PREMIUM ENDOTHERMIC GAS
- NO MORE GAS WASTE
- LOWER RUNNING COSTS



Eco-friendly technology

#### FEATURES & BENEFITS

- Full-color touch screen
- Integrated dew point control
- Integrated temperature control
- Ratio controller
- Fuel-Injection control valve
- Integrated paperless chart recorder (5+ yr. data storage)
- Large turndown capability
- Reduce operating costs
- Touch screen control interface
- Minimize generator setup/startup time
- Electronic air flow meter
- Electronic gas flow meter
- Mixing blower
- Relief valve
- Air inlet filter
- Eliminate gas waste
- No lubrication required
- Precision dew point control
- Eliminate soothing of catalyst due to mistuned carburetors

#### USA

+1 414 462 8200  
sales.na@upc-marathon.com

#### CANADA

+1 514 335 7191  
sales.na@upc-marathon.com

#### CHINA

+86 21 3463 0376  
sales.mmichina.cn

#### FRANCE

+33 3 81 48 37 37  
sales.fr@upc-marathon.com

#### GERMANY

+49 7161 94888 0  
sales.de@upc-marathon.com

#### POLAND

+48 32 296 66 30  
sales.pl@upc-marathon.com

# UPC MARATHON

A NITREX COMPANY

## ENDOINJECTOR™

FULL-COLOR TOUCH SCREEN



## ENDOINJECTOR™

- PREMIUM ENDOTHERMIC GAS
- NO MORE GAS WASTE
- LOWER RUNNING COSTS

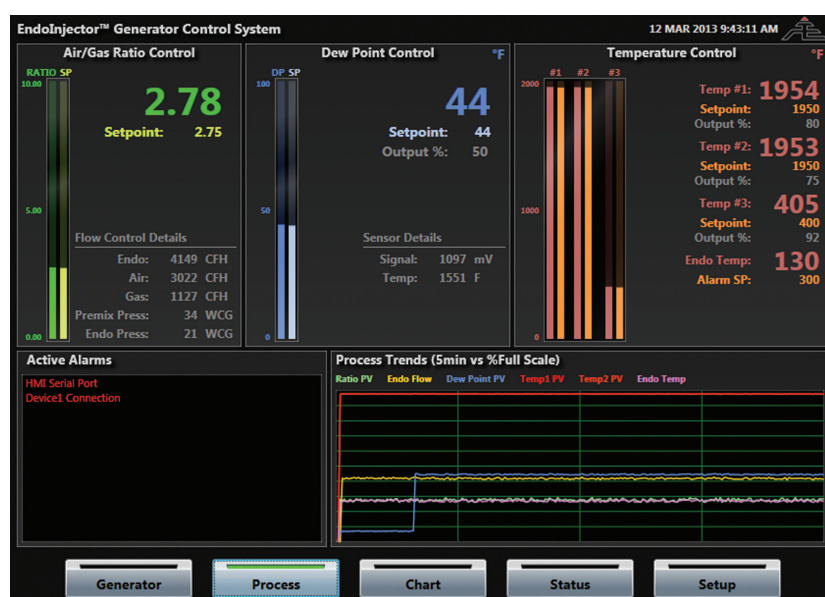


Eco-friendly technology

Air/Gas Ratio

Dew Point Control

Temperature Control



Alarm History Panel

Process Trends Panel

## SPECIFICATIONS

<b>CONTROL POWER</b>	110/220 VAC @ 50/60Hz
<b>BLOWER POWER</b>	230/460 VAC 3 Phase
<b>CAPACITY</b>	100-6000 CFH (Standard) / 100-14,000 CFH (Extended)
<b>TURNDOWN</b>	5:1 (or greater)
<b>MIN GAS PRESSURE</b>	+2.5 PSIG (Standard) / +0.5 PSIG (LP Model)
<b>MAX GAS PRESSURE</b>	5 PSIG All Models

<b>MAX OPERATING TEMP</b>	180°F
<b>COMMUNICATION PORTS</b>	232/485/Ethernet
<b>PROTOCOL</b>	ModbusRTU
<b>PORTS</b>	2" NPT (unless otherwise specified)
<b>GAS TYPES</b>	Propane or Natural Gas

### USA

+1 414 462 8200  
sales.na@upc-marathon.com

### CANADA

+1 514 335 7191  
sales.na@upc-marathon.com

### CHINA

+86 21 3463 0376  
sales@mmichina.cn

### FRANCE

+33 3 81 48 37 37  
sales.fr@upc-marathon.com

### GERMANY

+49 7161 94888 0  
sales.de@upc-marathon.com

### POLAND

+48 32 296 66 30  
sales.pl@upc-marathon.com