

NITREX

NXK COMPACT SERIES

COMPACT TURNKEY SYSTEM

The multipurpose NXK series of nitriding/nitrocarburizing systems is an economical and dependable choice for use in small scale processing as well as for general laboratory/testing purposes.

In comparison to our large-scale industrial line of NX models, these systems have a compact construction that makes efficient use of restricted floor space in a plant or shop. Available in five sizes, the furnace comes equipped with a control system and auxiliary equipment. The turnkey system is mounted on a platform for secure transport by forklift and for more practical and efficient installation. Every system is fully assembled, factory tested and certified, making on-site installation and startup quick and effortless.

NXK-412 COMPACT SYSTEM



NXK COMPACT SERIES

- PRACTICAL
- DEPENDABLE
- EFFICIENT
- ECONOMICAL



Eco-friendly technology

MAIN FEATURES

- Light ceramic fiber insulation for fast and efficient heating as well as cooling
- Kanthal heating elements
- Retort and all parts in contact with nitriding/nitrocarburizing atmosphere made of refractory alloy
- Recirculation turbine for uniform temperature/atmosphere distribution
- Automatic cover lifting system
- Control system for monitoring and controlling process parameters and furnace operations
- Integrated emissions control (neutralizer)
- Automatic emergency procedures
- Complete with process control software & NITREG® technology

BENEFITS

- Preconfigured & factory-tested
- Fully calibrated
- Pre-tested for metallurgical results
- Minimal space requirements
- Plug & Play
- Short startup period
- Low operating costs
- Easily moved into the heat treat facility with the help of a forklift

CANADA/USA

+1 514 335 7191
nitrex@nitrex.com

POLAND

+48 32 296 66 30
nitrex.europe@nitrex.com

CHINA

+86 (0) 10 6257 3050
nitrex.china@nitrex.com

NITREX
nitrex.com

NXK COMPACT SERIES

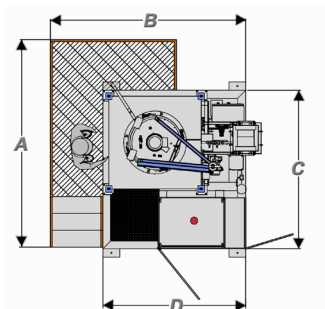
NXK COMPACT SERIES

- PRACTICAL
- DEPENDABLE
- EFFICIENT
- ECONOMICAL

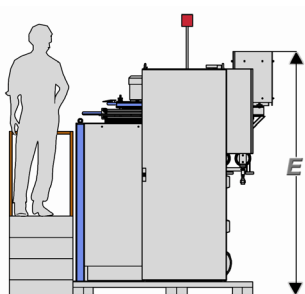


Eco-friendly technology

TOP VIEW



SIDE VIEW



OPTIONS AVAILABLE

- Custom racking
- Operator platform
- AMS 2759/12 compliance optional

SPECIFICATIONS

NXK SERIES	NXK-409	NXK-412	NXK-609	NXK-612	NXK-812	NXK-815
Working Space	Ø 400 x 900 mm H Ø 15¾" x 35½" H	Ø 400 x 1,200 mm H Ø 15¾" x 47¼" H	Ø 600 x 900 mm H Ø 23½" x 35½" H	Ø 600 x 1,200mm H Ø 23½" x 47¼" H	Ø 800 x 1,200mm H Ø 31½" x 47¼"	Ø 800 x 1,500mm H Ø 31½" x 59"
Load Capacity max.	300 kg / 660 lbs	400 kg / 880 lbs	600 kg / 1,300 lbs	800 kg / 1,700 lbs	1,200 kg / 2,600 lbs	1,500 kg / 3,300 lbs
Max. Temperature	650 °C / 1,200 °F	650 °C / 1,200 °F	650 °C / 1,200 °F	650 °C / 1,200 °F	650 °C / 1,200 °F	650 °C / 1,200 °F
Dimensions (footprint)						
System – Length	1,880 mm / 74"	1,880 mm / 74"	2,080 mm / 82"	2,080 mm / 82"	2,280 mm / 90"	2,280 mm / 90"
System – Width	1,700 mm / 67"	1,700 mm / 67"	1,900 mm / 75"	1,900 mm / 75"	2,100 mm / 83"	2,100 mm / 83"
System – Height	2,300 mm / 91"	2,600 mm / 102"	2,300 mm / 91"	2,600 mm / 102"	2,600 mm / 102"	3,300 mm / 130"
Platform – Length	2,460 mm / 97"	2,460 mm / 97"	2,660 mm / 105"	2,660 mm / 105"	2,860 mm / 113"	2,860 mm / 113"
Platform – Width	2,325 mm / 92"	2,325 mm / 92"	2,525 mm / 99"	2,525 mm / 99"	2,725 mm / 107"	2,725 mm / 107"
Min. Height Clearance (floor to crane hook)	3,200 mm / 126"	3,800 mm / 150"	3,200 mm / 126"	3,800 mm / 150"	3,800 mm / 150"	4,700 mm / 185"

* For non-standard sizes, please contact Nitrex for details. Nitrex reserves the right to make changes without notice.

NITREX

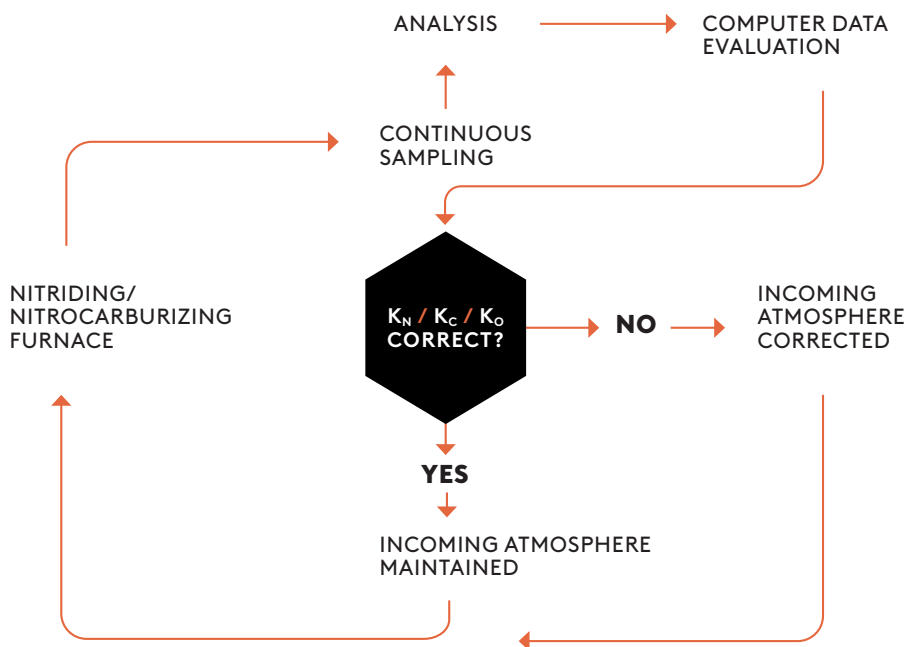
EXPERT CONTROL SOFTWARE & NITREG® FAMILY OF TECHNOLOGIES

The NITREG® family of technologies applies individually customized processes to different applications and materials for optimum results. The process is carried out in a closed-loop circuit, which enables the control system to respond automatically to the changes in nitriding conditions that occur during the process cycle.

The control system continuously samples and analyzes the furnace atmosphere, and based on the data extracted, it adjusts the process parameters in order to maintain the preset value of the K_N , K_C and K_O .

CLOSED-LOOP PROCESS CONTROL

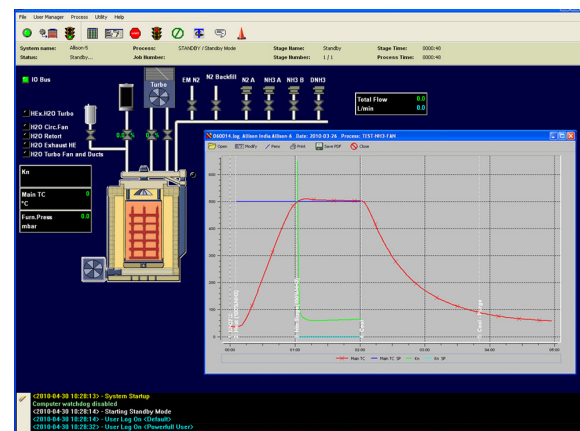
This closed-loop process control enables the system to respond automatically to the changes in nitriding/nitrocarburizing conditions that occur during the process cycle.



NITREG® TECHNOLOGY
offers customized
processes for a variety
of applications & materials
with optimum results.

INTUITIVE USER INTERFACE

The user interface contains data points on the furnace, on processes, jobs, and stages, displaying variables such as temperature, flows, power output, nitriding potential, as well as the actual status of the nitriding process and system equipment.



- Intuitive control interface contains all information on the furnace
- Over 30 signal sensing points are continuously displayed on the control screen
- The control software includes troubleshooting, emergency and calibration menus

CANADA/USA
+1 514 335 7191
nitrex@nitrex.com

POLAND
+48 32 296 66 30
nitrex.europe@nitrex.com

CHINA
+86 (0) 10 6257 3050
nitrex.china@nitrex.com

NITREX
nitrex.com

NITREX

AUXILIARY EQUIPMENT

EVERYTHING FOR YOUR NITREX SYSTEM

A Nitrex system is not complete without the right auxiliary equipment to support, enhance, and optimize the nitriding/nitrocarburizing process and operational efficiency.

All equipment is properly sized and vetted to ensure maximum performance from your Nitrex system.

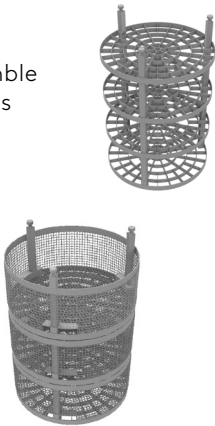
AUXILIARY EQUIPMENT
designed to enhance
the functionality of a
Nitrex nitriding system
and ensure optimum
performance



Eco-friendly solutions

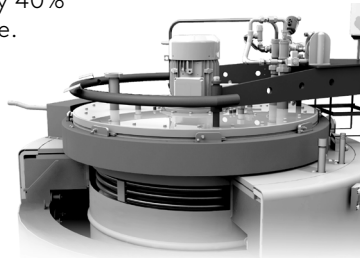
RACKING

Easy-to-assemble
Inconel baskets
and trays
constructed
for safe and
easy loading.



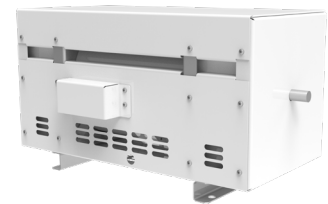
ACCELERATED COOLING

Internal accelerated
cooling system
to reduce cooling
time by 40%
or more.



AMMONIA DISSOCIATOR

Economical and safe supply
of dissociated ammonia.



EFFLUENT NEUTRALIZER

Eliminates residual ammonia
and/or other pollutant gases from
nitriding/nitrocarburizing
system exhaust.



WATER COOLING

Recirculates clean cooling
water to prolong the
longevity of furnace
elements.



CANADA/USA

+1 514 335 7191
nitrex@nitrex.com

POLAND

+48 32 296 66 30
nitrex.europe@nitrex.com

CHINA

+86 (0) 10 6257 3050
nitrex.china@nitrex.com

NITREX
nitrex.com