

NITREX

NXH HORIZONTAL SERIES

NXH TURNKEY SYSTEM

The NXH front-loading batch furnaces are designed to have fast heat-up rates and a uniform temperature throughout the load. Optional internal cooling systems reduce cooling times, shortening total cycle time, and maximizing furnace usage.

ADVANCED FURNACE

As part of a turnkey system, the NXH furnace operates completely automatically and autonomously, with little human intervention. All phases of the process, including purging, heating, nitriding, and cooling are carried out in a single continuous cycle. Closed-loop process control allows the system to automatically adjust to changes in nitriding/nitrocarburizing conditions that occur during the process cycle.

NXH-669 TURNKEY SYSTEM



NXH HORIZONTAL SERIES

- PRACTICAL
- DEPENDABLE
- EFFICIENT
- ECONOMICAL



Eco-friendly technology

MAIN FEATURES

- Separate heating zones for accurate temperature control.
- Light ceramic fiber insulation for fast and efficient heating as well as cooling
- Kanthal heating elements
- Double-wall retort made of refractory or Inconel 600 alloy
- Cover seal for gas tight retort
- Nitrex process control system monitors & controls parameters and furnace operations automatically

BENEFITS

- Fully Automated Operation
- True Nitriding / Nitrocarburizing Process Control
- Superior Case Properties
- Various Case Configurations
- Easy Loading / Unloading
- Significantly Reduced Cooling Times
- Low Operating Cost
- Proven System Reliability
- High Productivity
- Repetition of Results
- Minimum Maintenance Requirements

CANADA/USA

+1 514 335 7191
nitrex@nitrex.com

POLAND

+48 32 296 66 30
nitrex.europe@nitrex.com

CHINA

+86 (0) 10 6257 3050
nitrex.china@nitrex.com

NITREX
nitrex.com

NITREX

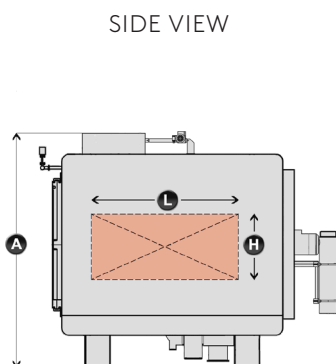
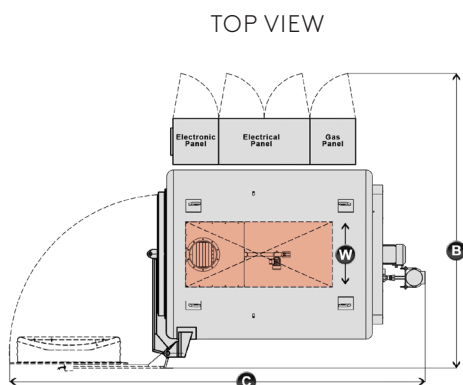
NXH HORIZONTAL SERIES

NXH HORIZONTAL SERIES

- PRACTICAL
- DEPENDABLE
- EFFICIENT
- ECONOMICAL



Eco-friendly technology



OPTIONS AVAILABLE

- Accelerated-cooling system
- Automatic door opening
- Effluent neutralizing
- Custom racking
- Charge cars

SPECIFICATIONS

| SERIES | Working Space (W x H x L) | Load Capacity (max) | Max Temperature | Working Temperature | Dimensions (A x B x C) |
|------------|--|------------------------|--------------------|------------------------|---|
| NXH 669 | 23½" x 23½" x 35½" 600 x 600 x 900 mm | 1700 lbs / 800 kg | 1200°F / 650°C | 1110°F / 600°C | 102" x 130" x 181" 2600 x 3300 x 4600 mm |
| NXH 6612 | 23½" x 23½" x 47¼" 600 x 600 x 1200 mm | 2200 lbs / 1000 kg | 1200°F / 650°C | 1110°F / 600°C | 102" x 130" x 193" 2600 x 3300 x 4900 mm |
| NXH 9812 | 35½" x 31½" x 47¼" 900 x 800 x 1200 mm | 3300 lbs / 1500 kg | 1200°F / 650°C | 1110°F / 600°C | 114" x 154" x 193" 2900 x 3900 x 4900 mm |
| NXH 9818 | 35½" x 31½" x 71" 900 x 800 x 1800 mm | 5500 lbs / 2500 kg | 1200°F / 650°C | 1110°F / 600°C | 114" x 154" x 217" 2900 x 3900 x 5500 mm |
| NXH 101015 | 39½" x 39½" x 59" 1000 x 1000 x 1500 mm | 5500 lbs / 2500 kg | 1200°F / 650°C | 1110°F / 600°C | 130" x 173" x 224" 3300 x 4400 x 5700 mm |
| NXH 101018 | 39½" x 39½" x 71" 1000 x 1000 x 1800 mm | 6600 lbs / 3000kg | 1200°F / 650°C | 1110°F / 600°C | 130" x 173" x 236" 3300 x 4400 x 6000 mm |

* Other sizes are available. Please contact Nitrex for details. Nitrex reserves the right to make changes without notice.

CANADA/USA
+1 514 335 7191
nitrex@nitrex.com

POLAND
+48 32 296 66 30
nitrex.europe@nitrex.com

CHINA
+86 (0) 10 6257 3050
nitrex.china@nitrex.com

NITREX
nitrex.com

NITREX

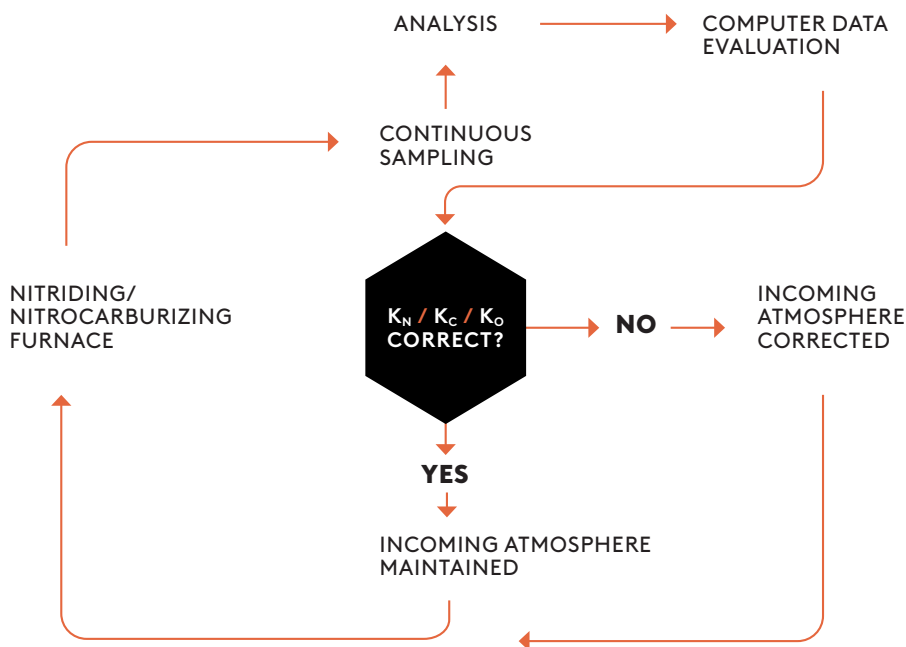
EXPERT CONTROL SOFTWARE & NITREG® FAMILY OF TECHNOLOGIES

The NITREG® family of technologies applies individually customized processes to different applications and materials for optimum results. The process is carried out in a closed-loop circuit, which enables the control system to respond automatically to the changes in nitriding conditions that occur during the process cycle.

The control system continuously samples and analyzes the furnace atmosphere, and based on the data extracted, it adjusts the process parameters in order to maintain the preset value of the K_N , K_C and K_O .

CLOSED-LOOP PROCESS CONTROL

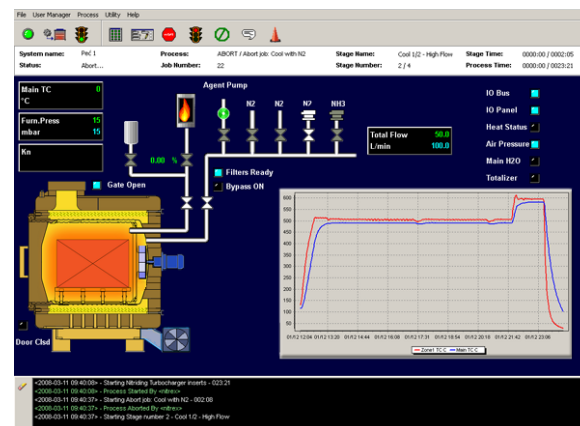
This closed-loop process control enables the system to respond automatically to the changes in nitriding/nitrocarburizing conditions that occur during the process cycle.



NITREG® TECHNOLOGY
offers customized
processes for a variety
of applications & materials
with optimum results.

INTUITIVE USER INTERFACE

The user interface contains data points on the furnace, on processes, jobs, and stages, displaying variables such as temperature, flows, power output, nitriding potential, as well as the actual status of the nitriding process and system equipment.



- Intuitive control interface contains all information on the furnace
- Over 30 signal sensing points are continuously displayed on the control screen
- The control software includes troubleshooting, emergency and calibration menus

CANADA/USA
+1 514 335 7191
nitrex@nitrex.com

POLAND
+48 32 296 66 30
nitrex.europe@nitrex.com

CHINA
+86 (0) 10 6257 3050
nitrex.china@nitrex.com

NITREX
nitrex.com

NITREX

AUXILIARY EQUIPMENT

EVERYTHING FOR YOUR NITREX SYSTEM

A Nitrex system is not complete without the right auxiliary equipment to support, enhance, and optimize the nitriding/nitrocarburizing process and operational efficiency.

All equipment is properly sized and vetted to ensure maximum performance from your Nitrex system.

AUXILIARY EQUIPMENT
designed to enhance
the functionality of a
Nitrex nitriding system
and ensure optimum
performance



Eco-friendly solutions

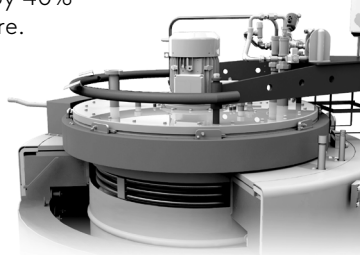
RACKING

Easy-to-assemble
Inconel baskets
and trays
constructed
for safe and
easy loading.



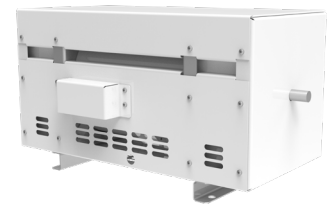
ACCELERATED COOLING

Internal accelerated
cooling system
to reduce cooling
time by 40%
or more.



AMMONIA DISSOCIATOR

Economical and safe supply
of dissociated ammonia.



EFFLUENT NEUTRALIZER

Eliminates residual ammonia
and/or other pollutant gases from
nitriding/nitrocarburizing
system exhaust.



WATER COOLING

Recirculates clean cooling water
to prolong the longevity of
furnace elements.



ACCELERATED WATER COOLING SYSTEM

Maintains a consistent and
controlled supply of clean water
to the cooling coils of the
furnace's accelerated cooling
internal heat exchanger.



CANADA/USA

+1 514 335 7191
nitrex@nitrex.com

POLAND

+48 32 296 66 30
nitrex.europe@nitrex.com

CHINA

+86 (0) 10 6257 3050
nitrex.china@nitrex.com

NITREX
nitrex.com